

The Signal

RSUTV PUBLIC TELEVISION

APRIL 2016

Q&A with 'Osiyo' Host
Jennifer Loren

PLUS

'Mystery Science Theater 3000'
Returns to RSUTV

Profile: Wyland's Art Studio



FROM THE GENERAL MANAGER'S DESK



Royal Aills
General Manager,
RSUTV

RSU Public TV is proud to be a local broadcaster. When you think of the word “local” what comes to mind? Does it bring to memory your favorite place to eat, your local hangout, or your local place to worship? To me, “local” means all those things, but it also makes me think of “local ownership.” It’s great when the local owner of my favorite restaurant comes to my table and asks me how the food was, or when I’m leaving the sanctuary of my church and the pastor shakes my hand, calling me by name. That great personal touch seems to be disappearing. More and more of our favorite places to eat or visit seem to be corporate owned... that local, personal touch isn’t there anymore, it’s virtually nonexistent.

It’s important to remember that the men and women who own their own businesses in the community in which we live have the biggest risks and rewards for success. They expect their customers (you and me) to give them instant feedback. Local business owners tend to be proactively involved in their communities and they keep more of the profits circulating in the local economy. Unfortunately, not all of the things we enjoy these days are locally owned. That includes the media. BUT! RSU Public TV is locally owned. We are licensed to Rogers State University in Claremore. We are one of three locally-owned and operated television stations based in Tulsa. Decisions about programming and outreach are made by people who live in the Tulsa community.

That’s the way it always was for over 50 years in the broadcast industry. The rule was clear... local broadcast owners could only own one radio and one TV station in a market (or city). Nationally that same owner could only own up to five stations, but over the years the rules have changed. When they did, so did the local ownership. Most local ownerships sold to large corporations whose offices are out of town in another state. In the 1990s, these large media conglomerates petitioned the FCC to relax the ownership rules and won. Today, they can own two TV stations and eight radio stations plus the local cable company, which is probably your internet provider. Multiply that over several cities in many states, these large corporations own most of the media outlets. For example, in the Tulsa market, Cox Media is based in Atlanta and owns Cox Cable, Fox 23 and My 41 plus five radio stations, KJSR, KRMG-FM, KRMG- AM, KRAV, and KWEN. The E. W. Scripps broadcast company based in Cleveland, Ohio owns KJRH Channel 2 and five radio stations, Big Country 99.5, KFAQ-AM, KVOO, KHITS and KBEZ. The Sinclair Broadcast Group based in Hunt Valley, Maryland, owns KTUL, while Griffin Communications based in Oklahoma City owns KOTV and the CW. OETA based in Oklahoma City owns KOED channel 11, LeSea Broadcasting based in South Bend, Indiana, owns KWHB TV 47 and KGEB owned by ORU is based in Tulsa.

The local landscape has changed. You can no longer call the owner of a local commercial TV station and complain to him that you did not like last night’s program. Instead you’ll talk to a General Manager who isn’t from here. That’s not inherently bad, but it is also not ALL local. Station policies and program decisions are typically made somewhere else, and the ability of any one individual to make his or her voice heard on viewing issues is almost non-existent. Concerning RSU Public TV, we set our own policies, make our own program decisions, and answer questions when our viewers call or write. We listen to our viewers and respond to their needs as efficiently as possible. Plus, we have in place a Community Advisory Board which is made up of community leaders and educators who I (the GM) and my staff listen too. They provide RSU TV leadership advice on content, station goals and serve as the communications link between the station and viewers we serve.

Most of our financial support comes from the federal government (through the Corporation for Public Broadcasting), Rogers State University, many corporate underwriters, and YOU our viewers. That personal touch is what it’s all about! RSU Public TV rises and falls based on how responsive we are to our viewers’ local needs. Our license to broadcast—along with that of other stations—requires us to operate “in the public interest, convenience, and necessity.” We value that obligation, and we work hard every day to adhere to it. We say that RSU Public TV is “Uniquely Oklahoma” and it is! We strive to make certain our programming and community outreach reflects our commitment to you.

So, when you see me at any of our community outreaches, or at Rotary, or when I’m in the grocery store, you can always walk up to me and talk about RSU Public TV. Feel free to tell me what you like and don’t like. We want to hear from you, often, because we are all about “local”.

— Royal Aills

The Signal

APRIL 2016

Published by Rogers State University, 1701 W. Will Rogers Blvd., Claremore, OK 74017. Produced by the RSUPR.

Dr. Larry Rice
President

Royal Aills
RSU Public TV General Manager

Randy Riggs
Graphic Designer

Rogers State University, in compliance with all applicable Federal and State laws and regulations, does not discriminate on the basis of race, color, national origin, sexual orientation, genetic information, sex, age, religion, disability, political beliefs, or status as a veteran in any of its policies, practices, or procedures. This includes but is not limited to admissions, employment, housing, financial aid, and educational services. This publication was issued by Rogers State University. Printed April 2016.

RSU Public Television
1701 West Will Rogers Blvd.
Claremore, Oklahoma 74017

Phone: 918-343-7657
Toll Free: 800-823-7210
Fax: 918-343-7952
E-Mail: krsc-tv@rsu.edu
Facebook: www.facebook.com/RSUPublicTV
Twitter: www.twitter.com/RSUPublicTV
Website: www.rsu.tv

From Our Viewers

Lee in Oologah says she is retired, and still an active artist who especially loves our art programming. She is “so proud of RSU TV and how the station has advanced!” and that RSU TV “is the first thing she turns on in the morning and the last thing she watches at night.” Lee is a contributing viewer who says we make a real difference in her day.

Patricia from Ada says she watched our “Verdigris: In Search of Will Rogers” special that aired on 1.12.16. She said to tell the writer and producer, Beau Jennings and everyone, “Thank you very much! I am in my 60’s and that special really meant a lot.” She was very impressed.



CONTENTS

- 4-5** COVER STORY: Q&A with 'Osioy' Host Jennifer Loren
- 6** 'Mystery Science Theater 3000' Returns to RSUTV
- 6** Morris HS Wins 1st Place in 'I Want Answers'
- 7** '1916 Irish Rebellion' Debuts April 24
- 8** Production Notes with Tim Yoder
- 8** 'Living Grand on Grand Lake' is Back for Season 3
- 9** Program Pipeline with Jennifer Sterling
- 10** What's on RSUTV 35.1
- 10** What's on RSUTV2 35.2
- 11** RSUTV 35.1 May Primetime Schedule
- 12** RSUTV2 35.2 May Daytime Schedule
- 13** FNX May Primetime Schedule
- 14** Profile: 'Wyland's Art Studio'
- 15** Sam's Perspective with Sam Jones
- 16** RSU Radio Report with Cathy Coomer
- 17** RSU Radio Specialty Evening Program Schedule
- 18** RSU News



Q&A with 'Osियो' Host

Jennifer Loren



"Osियो, Voices of the Cherokee People" is back for another year on RSU Public TV. This monthly news magazine-style program features the people, places, history and culture of the Cherokee Nation. RSU Public TV recently sat down with Jennifer Loren, the show's Executive Producer, for a Q&A to get her thoughts of how the show was created and where it's going this next year.

"Osियो" is a news magazine-style program, who came up with the show's format?

When the show idea was first pitched to me by Amanda Clinton, Vice President of Communications for the Cherokee Nation, she said she wanted it to be in the style of "CBS Sunday Morning." I was "in" from that moment on. It's the perfect format for the message we are trying to send.

Season two is now underway. How surprised are you at the reception for the show?

When we started pre-producing the show, it was clear that Cherokee Nation citizens were hungry for a show like this. The feedback from those viewers has been 100 percent positive. What's been surprising is the reaction from non-native viewers. We receive feedback daily from people with no connection to the Cherokee Nation who say they love our show and watch it every week. One the purposes of our show is to inform non-natives about who we really are, so this is music to our ears.

You feature many artists and musicians. Do you discuss current events?

We do talk about current events. In each episode, we feature three or four news items, showing current happenings from the Cherokee Nation. But the main focus is on stories that will be "evergreen," if you will, that will live on and people can enjoy for years.

In the middle of the show there is an Almanac. Who came up with the idea of using an Almanac?

The history of the Cherokee Nation is fascinating and rich and sad and it was a no-brainer to feature some of that history in a monthly almanac segment. Together, Amanda Clinton, myself and my co-producer/directors, Jeremy Charles and Sterlin Harjo, decided how to do it.

There is a segment "Let's Talk Cherokee." What's the story behind that segment?

"Let's Talk Cherokee" is a teaching tool. The Cherokee language is an important part of who we are and this is just one way we can pass on our heritage. We have heard from teachers who say they use our show, and this segment specifically, as a teaching tool in their classrooms. Personally, I love to hear our speaker and language expert John Ross speak the language and teach it to younger generations. It's magical.

The features range from Colby Brittain, a male model living in New York City to remembering the forced removal bike ride. How do you find the people for your features?

When we first started producing the show, we traveled to different Cherokee Nation properties and visited with employees about people they knew who should be featured. We created a list of "story ideas" that has grown to include hundreds of people and possible feature segments. As the executive producer, I decide which segments to put in each episode. I try to make each show diverse in its content, including something traditional and something modernizing in each one.

What is the criteria to be considered for a feature?

When we choose our features we are looking for a person or topic that can tell a good story. We look for Cherokee Nation citizens who are doing something interesting or important. Features also have to be visually interesting. This is television after all and our videographers are really film makers, creating

Q&A with 'Osियो' Host Jennifer Loren continued...



stories that are beautiful to watch. We like some of our features to “modernize” the Cherokee Nation, showing that our people are regular people, just like everyone else.

Not only do you air the program on RSU Public TV, you also air the show on other stations. Which ones and what are the times?

Our show airs in Tulsa on KJRH, 2 Works For You, on Saturdays at 6:30 p.m. and on KTUL, Tulsa’s Channel 8, on Sundays at 9:30 a.m. It also airs in Oklahoma City, Fort Smith and Fayetteville, Arkansas, Joplin, Missouri and nationally on FNX-TV, another PBS affiliate.

Are you going to take the show out of state and air it in other states?

The show already airs in other states on FNX-TV. My cousin in Los Angeles texted me that she watches it with her kids all the time. Pretty cool! We would like to expand our reach even further and are currently exploring other options.

Every show has a shelf life. What is the hope of your team and the plan of the Cherokee Nation to keep “Osियो” in production?

The Cherokee Nation is the largest Native American tribe in the country with 340,000 citizens. We believe this show could go on forever, telling stories of Cherokees from coast to coast and really around the globe. Principal Chief Bill John Baker has pledged to continue his support of the show as long as he is in office.

Jennifer, you are the show’s host and producer. I know you don’t do this by yourself. There is a team behind you. Who are they and what are their backgrounds?

I couldn’t do this without the support of the best team on earth. Shawn Slaton is the CEO of Cherokee Nation Businesses who provides the funding for our show. Without him, we wouldn’t have a show. Amanda Clinton is the supervising producer. She helps us decide which stories to do

and with post-production approvals and edits. Jeremy Charles and Sterlin Harjo are co-owners of FireThief Productions, the company we hired to produce the show. The two of them provide vital creative direction and hire the videographers and other production staff that create the pieces of the show. There are other employees at Cherokee Nation Businesses who play important roles as well, from updating our social media pages to recording the news videos to managing our OsियोTV booth at special events.

Once a show is underway, producers begin to find the ebb and flow of how the show will look and feel for their audience. Any changes to the show in season 2?

We decided to change the language lesson for season two. The Cherokee language is not easy to learn and we are still trying to find the best way to teach people through a visual medium. This season we added children as speakers to show that it’s possible for anyone to learn how to speak.

You can watch “Osियो, Voices of the Cherokee People” every Saturday at 9:30 a.m. on RSU Public TV.



'Mystery Science Theater 3000' Returns to RSUTV

The cult comedy series "Mystery Science Theater 3000" (aka MST3k) is coming back to RSU Public TV on Sunday nights at 9 p.m. in May!

In the "not too distant future," "Mystery Science Theater 3000" chronicles the misadventures of an unlucky janitor (played by show creator Joel Hodgson, and later by Mike Nelson) imprisoned on a space station by mad scientist Dr. Forester. He is joined by a group of snarky robots and is forced to watch continual stream of B-movies to help Dr. Forester and his sidekick Frank (known as the Mads) find the perfect B-movie to use as a weapon to take over the world. "Mystery Science Theater 3000" gleefully skewers the worst that Hollywood has to offer.

Originally running from 1988-1999, "Mystery Science Theater 3000" began airing on what was then known as KTMA-TV, better known today as The CW. The series was then picked up by The

Comedy Channel in 1989, followed by Comedy Central in 1991. Its final seasons were picked up and aired on Syfy, then known as The Sci-Fi channel, from 1997 to 1999. Thanks to American Public Television, fans can watch the best of the series right here on RSU-TV!

In the new season coming to RSU-TV in May, Joel, Mike, and the bots endure another Hercules movie, rabid shrews, alien teenagers, and the antics of the Mads. Dr. Forester's mother, Pearl, joins the cast after visiting for Thanksgiving. Pearl stirs up trouble of her own, proving she's as much of a Mad as her son is. With movies like "The Incredibly Strange Creatures Who Stopped Living and Became Mixed-Up Zombies," and all the antics of the bots and the Mads, how could there not be plenty of laughs along the way?

We hope you'll join us May 1st at 9 p.m. for the season premiere with "Cave Dwellers"!



Morris HS Wins 1st Place in 'I Want Answers'

On February 9, the "I Want Answers" team from RSU Public TV traveled to Morris High School to congratulate the Morris Academic Team for winning "I Want Answers" for the 2015-2016 season. The entire high school student body gathered in the auditorium to watch a replay of the championship episode and cheer on their team. At the conclusion of the video, "I Want Answers" host Jeff Gaffen invited the team to the stage. The four students on the team each received a \$2,000 scholarship. Each student was presented with a certificate, the team received a trophy, and they posed for a photo with the giant check.

RSU Public TV also visited Stigler High School to congratulate the Stigler Academic Team for their runner-up finish. Representatives from the show's sponsors were on hand to help congratulate the students at both schools.

Now in its fifth year, "I Want Answers" featured 16 area high school academic teams selected to compete for \$12,000 in scholarship money. Over the course of the five seasons of the show, \$60,000 in scholarships have been awarded to the winning students.

The show consists of three rounds of questions covering topics including science, literature, math, history and current events. Each school sends a team of four students to compete on the show, and the season is conducted in a single elimination bracket format.

"I Want Answers" is an important part of RSUTV's mission to be involved in the community. Each year an effort is made to include schools that are in rural areas that may not have as many scholarship opportunities as those in the larger cities. Clayton and Riverfield schools were also represented in the semi-finals.

A very special thanks goes to our scholarship sponsors, the Grand River Dam Authority, Rogers State University, the University of Oklahoma, Oklahoma State University, and the Gerald H. Westby Jr. Foundation.

**By Daniel Murphree
Producer, "I Want Answers"**



First place winning team members from Morris



Second place winners Stigler with host Jeff Gaffen and scholarship donor representatives. Jessica Medina – OSU, Taylor Longnecker – RSU, LaWanna Summers – OU and Justin Alberty – GRDA

'1916 Irish Rebellion' Debuts April 24



It was on Easter Monday 1916 when a small group of Irish rebels took on the might of the British Empire. This collection of poets, teachers, actors, and workers were few in number but they were strong in purpose and destiny. Although defeated militarily, the men and women of the Easter Rising would soon win a moral victory. Their actions lead to the creation of an independent Irish state and contributed to the eventual disintegration of the British Empire. This event became known as the Irish Uprising and the events of that day inspired countless freedom struggles throughout the world, from Ireland to India.



"1916 – The Irish Rebellion," narrated by acclaimed actor and Irish native Liam Neeson, is a three-part documentary series that commemorates the 100th anniversary of the Easter Uprising, an event that led to the establishment of an independent Irish State and, indirectly, to the breakup of the British Empire. Each of the three 60-minute episodes features a combination of rarely seen archival footage, new segments filmed on location worldwide, and interviews with leading international experts. This fresh approach to telling the story helps to place these events in their proper historical, political, and cultural context as the precursor to an independent Irish state and the disintegration of colonial empires worldwide.

Join RSU Public TV and the Tulsa chapter of the Ancient Order of Hibernians for a watch party as they broadcast the premiere of the first episode of "1916 – The Irish Rebellion." The screening will be on Sunday, April 24 from 6-8:30 p.m. at the American Legion Post 1, 11328 E Admiral Place in Tulsa. Before the show airs at 7 p.m., there will Irish food for sale, along with music and a commemorative ceremony. A cash bar will be available. Parts 2 and 3 of the series will air on the following nights.

Part One: Awakening

Sunday, April 24, 7 p.m.

This episode traces events in Ireland and abroad leading to the preparations for the Rising. The themes and events covered include the rise of cultural nationalism, the re-emergence of the separatist physical force tradition, the contested traditions of nationalism and unionism, the rise of organized labor, the role of women, the role of Irish America, and the influence of the diaspora and international political movements.

Part Two: Insurrection

Monday, April 25, 7 p.m.

The second episode tells the dramatic story of the Rising itself; the way in which the clandestine and separatist Irish Republican Brotherhood infiltrated the Irish Volunteer Movement; the attempt to secure assistance from Britain's enemy Germany; the arrest of Roger Casement and the botched gun-running off the coast of Ireland immediately before the Rising; the confusion surrounding the order and countermand for a call up of the Irish Volunteers on Easter Sunday; British Intelligence awareness of what was planned and an apparent lack of readiness to tackle what happened on Easter Monday.

Part Three: When Myth and History Rhyme

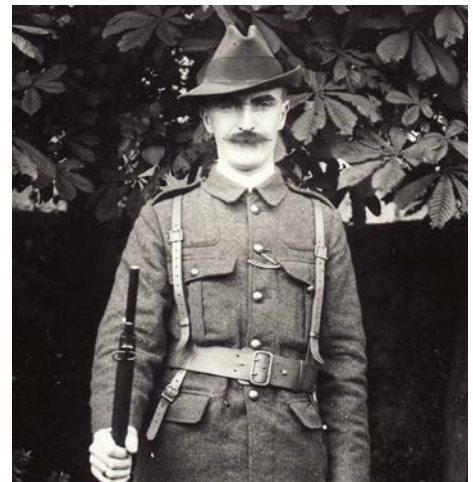
Tuesday, April 26, 7:00 p.m.

The concluding episode details the aftermath and response to the Rising in Ireland and abroad. The initial reaction of many Dubliners to the Rising gave way to a grudging respect that grew exponentially with the British response. The rebellion, while ostensibly a failure, created the conditions for a national revolution and changed the course of Irish history.

The Ancient Order of Hibernians in America is an Irish-Catholic Fraternal Organization founded in New York City in 1836. The Order can trace its

roots back to a parent organization of the same name, which had existed in Ireland for over 300 years. The AOH in America was founded on May 4, 1836 at New York's St. James Church, to protect the clergy and church property from the "Know Nothings" and their followers. Later the vast influx of Irish immigrants fleeing The Great Hunger, An Gorta Mór, in Ireland, in the late 1840s, prompted a growth of social societies in the United States to aid these refugees.

For additional information about the screening or the event, contact Jennifer Sterling, manager of content and community engagement at 918-343-7882 or jsterling@rsu.edu.



Irish Martyr

Michael O'Rahilly was the first of the actual leaders of the Rebellion to die and the only one killed in action. Although a founding member of the Irish Volunteers who believed that armed revolt was the only way to end British rule in Ireland, he opposed the timing of the Easter Rising but felt honor bound to participate once it had started, deciding that 'having helped to wind the clock he must come to hear it strike.' When fires in the General Post Office became unbearable, O'Rahilly led a group in a charge up Moore Street and got as far as the corner of Ridley Road and Moore Lane when he was shot. Crawling to a nearby doorway he had time to write a final note to his wife Hannah, who he left behind, along with three sons. 'It was a good fight anyhow,' he said.

Production Notes with Tim Yoder



Tim Yoder
Production Manager

Things are humming along in the Production department and we are working on several high profile projects. We are wrapping up a yearlong series of informational spots for the MidAmerica Industrial Park that highlight young Oklahomans who have secured successful careers at the one of the nation's largest industrial parks, which is located in Mayes County.

Oklahoma Heroes, highlighting Oklahoma veterans, is in full swing with several Oklahomans already interviewed. The focus of the segments looks at veterans who not only served our country but also came back and made a difference in their community. We are in the planning stages for a new talk show with the Tulsa Regional Chamber. The monthly show will focus on subjects such as economics, art, and events happening in Tulsa. Our crew is working on a promotional project for the Oklahoma Military Academy, RSU's predecessor school, that will emphasize the bond OMA graduates have with present day RSU students. Our popular vintage movie show "Film Noir" will start production of season two this April. "Film Noir" features RSU Public TV's Manager of Content and Community Engagement Jennifer Sterling and well-known writer and personality John Wooley. The duo discuss and give insight on the classic films from the noir genre.

"Green Country People and Places" season three is in the books and shooting for season four is underway. The winners of "I Want Answers!" were recently awarded their scholarships and work is underway on a new design for next season's set.

We also would like you to join us in welcoming our newest production department employee, Emily Elliot. She is our new director/producer and will be in charge of all studio productions. Emily has been a television director for 20 years, with the last 15 years as a director for KTUL Channel 8 (all of it on the EARLY morning shift!). She will be a big asset to RSU Public TV, just as soon as she gets used to working in the daylight.



Emily Elliot
Producer/Director

"Hi, my name is Emily Elliot and I started at WPSD in western Kentucky as a video tape operator in February 1995 and did that until around September 1995, and I then worked as a news photographer until October 1996. When they had a director's position they couldn't fill, I applied and they said, "We'll give you two weeks. If it doesn't work out, we'll send you back to news." Apparently, they forgot to send me back to news.

I started at KTUL in February 2001 as a director. I was at WPSD for six years, and decided it was time for a change. I wound up staying in Tulsa because I got married to the audio guy at KTUL. I left KTUL to work here. I needed a change of scenery after my husband had passed away, and you guys said you really needed me. Plus, not having to get up at 1 a.m. every morning is an added bonus."

'Living Grand on Grand Lake' is Back for Season 3

Mid America Industrial Park's Living Grand on Grand Lake is back on RSU Public TV for a third season. Grand Lake is home to big boats, big water and big fish. It's also home to a lifestyle only those who live at the lake know about. So to let everyone else in Northeast Oklahoma know about this great place to live, relax and enjoy the summer life, RSU Public TV will produce 13 new episodes of "Living Grand on Grand Lake". The Grand River Dam Authority (GRDA) is also an underwriter.

According to RSU Public TV General Manager Royal Aills, "We're glad to have Mid America and GRDA back as underwriters of this show. Their financial help allows us to produce the kind of programming you won't see on other stations, programming that make RSU TV 'Uniquely Oklahoma'".

The show is hosted once again by Kristi Wallace, senior marketing representative with INTEGRIS Grove Hospital. "I love this show." Kristi said. "People stop me at the store all of the time telling me how much they enjoy watching. They appreciate the fact that we are promoting the Grand Lake lifestyle with the positive stories about the many great things here."

"Living Grand on Grand Lake" will air starting in June, instead of April as in previous seasons. Aills says the change will give the show's producer, Stevie Fernandez, more time to get started creating content. "Last year with all of the rain we struggled to get our stories told in time for broadcast deadline. This year we'll have an additional 30 days to get the stories ready to air," says Aills.

The show will air on Thursday and Friday evening and again on Saturday mornings. It will also be available online at RSU.TV.



Program Pipeline with Jennifer Sterling



“The Last Enemy” *Tues. starting April 12, 9 p.m.*

Set in the not-too-distant future, “The Last Enemy” follows mathematician

Stephen Ezard (Benedict Cumberbatch) as he travels from China to his native England to attend the funeral of his brother Michael (Max Beesley), a relief worker who was killed by a landmine in Afghanistan. Upon his return, Stephen finds a world that has changed subtly but significantly from the one he left behind several years earlier. National security is tighter, biometric ID cards are compulsory, public spaces are monitored 24 hours a day, and armed police patrol the streets. Caught in the midst of a government surveillance scheme and the politics of global security, Stephen is forced to challenge his own complacencies about this new society.



“Symphony of the Soils” *Fri., April 22, 7 p.m.*

In celebration of Earth Day, “Symphony of the Soils” is a

documentary film that explores the complexity and mystery of soil. Filmed on four continents and sharing the voices of some of the world’s most esteemed soil scientists, farmers and activists, the film portrays soil as a protagonist of our planetary story. Using a captivating mix of art and science, the film shows that soil is a complex living organism, the foundation of life on earth. Yet most people are soil-blind and “treat soil like dirt.” Through the knowledge and wisdom revealed in this film, we can come to respect, even revere, this miraculous substance, and appreciate that treating the soil right can help solve some of our most pressing environmental problems.



“Refuge: Stories of the Selfhelp Home” *Fri., April 29, 8 p.m.*

May is Holocaust Remembrance

Month. In the late 1930s — with the violence and destruction of Kristallnacht foreshadowing the devastation of European Jewry — a determined group of German-Jewish refugees left behind well-established lives and most of their possessions and immigrated to Chicago. There, they set out to

create a supportive community for themselves and other German, Austrian and Czech Jews fleeing Nazi persecution. Eventually, they founded Selfhelp, an organization providing temporary housing, food, English classes, job placement and, in 1950, a residential home for elderly emigrés and Holocaust survivors. “Refuge: Stories of the Selfhelp Home” features the deeply personal stories of these residents, who spent the war years surviving by any means necessary. Vividly, they reflect on these experiences — of separations, deportations, selections and life-and-death decisions. “Refuge” moves back and forth seamlessly between these often heartbreaking stories and examines how the trajectories of residents and founders diverged during the war and came together again around Selfhelp.



“The Kennedy Half Century” *Sun., May 29, 9 p.m.*

May 29 marks the 99th anniversary of the birth of

John Fitzgerald Kennedy, the 35th president of the United States. Based on noted political scholar Larry Sabato’s book, “The Kennedy Half Century” chronicles the impact and influence of John F. Kennedy’s life, administration and tragic death on the public, the media and every subsequent U.S. president. John F. Kennedy’s legacy has endured for more than 50 years due to the early efforts of family and friends, as well as through Lyndon Johnson’s “Great Society” programs, Ronald Reagan’s tax cuts and Cold War strategies, Bill Clinton’s infatuation with the 35th president, and the “twinning” of JFK and Barack Obama in the 2008 presidential campaign. The compelling one-hour documentary features interviews with major political and media figures, including Bob Schieffer, Ron Reagan Jr., Kathleen Kennedy Townsend, Ari Fleischer, James Carville, Julian Bond, Andrew Bell, and Sabato, among others.



“Day of Days: June 6, 1944” *Sunday, June 5, 9 p.m.*

On June 6, 1944, thousands of Allied servicemen

landed on the shores of northern France, tasked with liberating Western Europe from Nazi tyranny. Over the ensuing hours and days, the men faced decimating machine-gun fire, mortars and artillery, eventually fighting their way inland, but not before suffering a staggering number of casualties. To commemorate the 70th anniversary of the Normandy landing, four D-Day veterans gather at the famed Museum of World War II outside of Boston to share their experiences from that fateful “Day of Days.” Cameras eavesdrop on their conversations as they vividly recall details from their ordeal — from the perils of the amphibious assault to the invasion’s gruesome aftermath. Their interactions with one another yield long-buried, and often painful, memories. They recount their transformations from boys to men, reveal their uneasiness with the term “hero,” and grapple with why they survived when so many others did not.



Jennifer Sterling
Membership-Program Manager

WPC 56
Saturdays at 7 p.m.

This British drama series centers on the challenges faced by the first women to join a fictional police force in the West Midlands. As the only Woman Police Constable (WPC) on the Brinford Beat, Gina Dawson, then Annie Taylor, struggle to overcome sexist attitudes and gain acceptance in a male-dominated police force



Music City Roots: Live From the Factory
Fridays at 10 p.m.

"Music City Roots" delivers the eclectic sound of the new Nashville. This series showcases the growing Americana music scene that embraces traditional and progressive folk, country, bluegrass, soul, gospel, and rock 'n' roll.

Autoline This Week
Tuesdays at 6 p.m.

"Autoline This Week" is dedicated to reporting on, discussing and dissecting the inner workings of the auto industry and the products that it makes. The 30-minute panel show focuses on topics that drive the industry as well as the men and women behind the wheel.



A Craftsman's Legacy
Sundays at 5 p.m.

Host Eric Gorges goes on a quest to discover the true craftsmen in today's world. Traveling across the country, Gorges interviews the men and women responsible for carrying tools, trades and traditions of fine craftsmanship in to the 21st century. From a glass blower to a guitar maker, a weaver to a potter, every episode explains the history of a traditional craft and the importance of that craft in the United States today.

Changing Seas
Tuesdays at 5 p.m.

"Changing Seas" takes viewers on an exciting adventure to the heart of our liquid planet. The documentary series offers an unprecedented look at how oceanographers and experts study earth's vast underwater wilderness, while shedding light on how over-fishing, global climate change and pollution threaten ocean resources.



Travelscope
Thursdays at 4:30 p.m.

In "Travelscope," award-winning travel journalist Joseph Rosendo explores the world's treasures—from stateside destinations in Montana's Glacier National Park and California's wine country to exotic locales in Europe, the Philippines and Malaysia. During his journeys, Rosendo provides cultural insights and useful information for making viewers' travel dreams a reality, while also encouraging conscientious travel, believing it has the power to connect disparate cultures

Healthy Body Healthy Mind
Tuesdays at 7 a.m.

Uplifting and energizing, this award-winning series explores the personal side of health breakthroughs in treatment, prevention and research with well-told real stories of doctors, scientists and patients. Host Scott McFarland, MD, is the Medical Director, Emergency Department, of the Palm Beach Gardens Medical Center. Every episode focuses on the stories of real people who are working to make life better for themselves and their families. In addition to compelling stories, hear advice from top experts in the fields of health and wellness and learn about the latest technological advancements that will bring you to the cutting edge of medicine.



Start Up

Thursdays at 7:30 a.m.

This series offers viewers an up-close and personal look into the world of the modern American entrepreneur. As complicated as starting a business may seem, the goal is to demystify the process by sharing the real life experiences of average Americans who are taking control of their own destiny while creating jobs for others. Over 90 percent of all companies in America are small businesses. Those small businesses employ over 50 percent of all people working in this country. Today's media rarely focus on the stories of those Americans and their hard work, despite small-business being the backbone of the country.



Backstage Pass

Fridays at 2 p.m.

Mixing intimate performance with personal interviews and behind the scenes footage, "Backstage Pass" is your front-row center seat for diverse music from Michigan's most talented artists. Whether the style is rock, jazz, folk, country, classical, or R&B, "Backstage Pass" delivers outstanding entertainment.



Cooking on the Wild Side

Tuesdays at 5 p.m.

You might recognize Phyllis Speer from her 2013 appearance on "Bizarre Foods with Andrew Zimmern" on the Travel Channel. Phyllis and host John Philpot cook up more than good cookin' on "Cooking on the Wild Side." This program is a cooking show for people who hunt, fish or just love the outdoors.



Rick Steves' Europe

Sundays at 11:30 a.m.

"Rick Steves' Europe" offers a fresh perspective on the best travel advice, including where to stay, what to see and how to get around in Europe. Rick Steves shares his extensive knowledge of European history, art and culture. His years as America's most popular European guidebook author blends with his relaxed but informative style to make this one of public television's most popular series.



SUNDAY	MONDAY	TUESDAY	WEDNESDAY	THURSDAY	FRIDAY	SATURDAY
1 6:00 Classic Gospel 7:00 Mystery Science Theater 3000 ■ 9:00 Afterlife 10:00 The Red Green Show	2 7:00 Miss Fisher's Murder Mysteries 8:00 Classic Gospel 9:00 Song of the Mountains	3 6:00 Autoline 6:30 Antiques Roadshow 7:00 Special Program ■ 8:00 Sherlock Homes	4 7:00 Midsomer Murders 8:00 Midsomer Murders 9:00 Lilies	5 6:00 Green Country People and Places 7:30 I Want Answers! 8:00 New Tricks 9:00 Miss Fisher's Murder Mysteries	6 6:00 Red Green Show 6:30 Green Country People and Places 7:00 Special Program ■ 8:00 Front and Center	7 7:00 WPC 56 8:00 Live From the Artist's Den 9:00 Woodsongs 10:00 The Red Green Show
8 6:00 Classic Gospel 7:00 Mystery Science Theater 3000 ■ 9:00 Afterlife 10:00 The Red Green Show	9 7:00 Miss Fisher's Murder Mysteries 8:00 Classic Gospel 9:00 Song of the Mountains	10 6:00 Autoline 6:30 Antiques Roadshow 7:00 Special Program ■ 8:00 Sherlock Homes	11 7:00 Midsomer Murders 8:00 Midsomer Murders 9:00 Lilies	12 6:00 Green Country People and Places 7:30 I Want Answers! 8:00 New Tricks 9:00 Miss Fisher's Murder Mysteries	13 6:00 Red Green Show 6:30 Green Country People and Places 7:00 Special Program ■ 8:00 Front and Center	14 7:00 WPC 56 8:00 Live From the Artist's Den 9:00 Woodsongs 10:00 The Red Green Show
15 6:00 Classic Gospel 7:00 Mystery Science Theater 3000 ■ 9:00 Afterlife 10:00 The Red Green Show	16 7:00 Miss Fisher's Murder Mysteries 8:00 Classic Gospel 9:00 Song of the Mountains	17 6:00 Autoline 6:30 Antiques Roadshow 7:00 Special Program ■ 8:00 Sherlock Homes	18 7:00 Midsomer Murders 8:00 Midsomer Murders 9:00 Lilies	19 6:00 Green Country People and Places 7:30 I Want Answers! 8:00 New Tricks 9:00 Miss Fisher's Murder Mysteries	20 6:00 Red Green Show 6:30 Green Country People and Places 7:00 Special Program ■ 8:00 Front and Center	21 7:00 WPC 56 8:00 Live From the Artist's Den 9:00 Woodsongs 10:00 The Red Green Show
22 6:00 Classic Gospel 7:00 Mystery Science Theater 3000 ■ 9:00 Afterlife 10:00 The Red Green Show	23 7:00 Miss Fisher's Murder Mysteries 8:00 Classic Gospel 9:00 Song of the Mountains	24 6:00 Autoline 6:30 Antiques Roadshow 7:00 Special Program ■ 8:00 Sherlock Homes	25 7:00 Midsomer Murders 8:00 Midsomer Murders 9:00 Lilies	26 6:00 Green Country People and Places 7:30 I Want Answers! 8:00 New Tricks 9:00 Miss Fisher's Murder Mysteries	27 6:00 Red Green Show 6:30 Green Country People and Places 7:00 Special Program ■ 8:00 Front and Center	28 7:00 WPC 56 8:00 Live From the Artist's Den 9:00 Woodsongs 10:00 The Red Green Show
29 6:00 Classic Gospel 7:00 Mystery Science Theater 3000 ■ 9:00 Afterlife 10:00 The Red Green Show	30 7:00 Miss Fisher's Murder Mysteries 8:00 Classic Gospel 9:00 Song of the Mountains	31 6:00 Autoline 6:30 Antiques Roadshow 7:00 Special Program ■ 8:00 Sherlock Homes				



MOORE
Fitzgerald
FUNERAL SERVICES



The **Chronicle**
of Grand Lake
The Voice of the Grand Lake Empire



B-Sew Inn
Sewing • Quilting • Embroidery

SUNDAY	MONDAY	TUESDAY	WEDNESDAY	THURSDAY	FRIDAY	SATURDAY
1 11:00 Inner Compass 1:00 Antiques Roadshow UK 2:00 Prime Suspect 3:00 Start Up	2 10:00 Refugees: Stories of the Selfhelp Home ■ 11:00 Midsomer Murders 1:00 The Red Green Show	3 10:00 Afterlife ■ 11:00 Midsomer Murders 1:00 The Red Green Show	4 10:00 Our Zoo ■ 11:00 New Tricks 1:00 The Red Green Show	5 10:00 The Last Enemy ■ 11:00 Prime Suspect 1:00 The Red Green Show	6 10:00 1916 The Irish Rebellion ■ 11:00 Sherlock Holmes 1:00 The Red Green Show	7 10:00 Digital Drive-In 12:00 Southern Accents 1:00 Smart Travels—Pacific Rim
8 11:00 Inner Compass 1:00 Antiques Roadshow UK 2:00 Prime Suspect 3:00 Start Up	9 10:00 Special Program ■ 11:00 Midsomer Murders 1:00 The Red Green Show	10 10:00 Afterlife ■ 11:00 Midsomer Murders 1:00 The Red Green Show	11 10:00 Our Zoo ■ 11:00 New Tricks 1:00 The Red Green Show	12 10:00 The Last Enemy ■ 11:00 Prime Suspect 1:00 The Red Green Show	13 10:00 Special Program ■ 11:00 Sherlock Holmes 1:00 The Red Green Show	14 10:00 Digital Drive-In 12:00 Southern Accents 1:00 Smart Travels—Pacific Rim
15 11:00 Inner Compass 1:00 Antiques Roadshow UK 2:00 Prime Suspect 3:00 Start Up	16 10:00 Special Program ■ 11:00 Midsomer Murders 1:00 The Red Green Show	17 10:00 Afterlife ■ 11:00 Midsomer Murders 1:00 The Red Green Show	18 10:00 Panama Canal: The Eighth Wonder of the World ■ 11:00 New Tricks 1:00 The Red Green Show	19 10:00 The Last Enemy ■ 11:00 Prime Suspect 1:00 The Red Green Show	20 10:00 Special Program ■ 11:00 Sherlock Holmes 1:00 The Red Green Show	21 10:00 Digital Drive-In 12:00 Southern Accents 1:00 Smart Travels—Pacific Rim
22 11:00 Inner Compass 1:00 Antiques Roadshow UK 2:00 Prime Suspect 3:00 Start Up	23 10:00 Special Program ■ 11:00 Midsomer Murders 1:00 The Red Green Show	24 10:00 Afterlife ■ 11:00 Midsomer Murders 1:00 The Red Green Show	25 10:00 Panama Canal: The Eighth Wonder of the World ■ 11:00 New Tricks 1:00 The Red Green Show	26 10:00 The Last Enemy ■ 11:00 Prime Suspect 1:00 The Red Green Show	27 10:00 Special Program ■ 11:00 Sherlock Holmes 1:00 The Red Green Show	28 10:00 Digital Drive-In 12:00 Southern Accents 1:00 Smart Travels—Pacific Rim
29 11:00 Inner Compass 1:00 Antiques Roadshow UK 2:00 Prime Suspect 3:00 Start Up	30 10:00 Special Program ■ 11:00 Midsomer Murders 1:00 The Red Green Show	31 10:00 Afterlife ■ 11:00 Midsomer Murders 1:00 The Red Green Show				



May Primetime Schedule

■ New Program/Special
■ New Season

SUNDAY	MONDAY	TUESDAY	WEDNESDAY	THURSDAY	FRIDAY	SATURDAY
1 6:00 We are the Indians 7:00 Modoc War 8:00 Native Voices 8:30 On Native Ground 9:00 Wapos Bay 9:30 Fish out of Water 10:00 The Aux 10:30 Native Shorts 11:00 Dances of Life	2 6:00 Working it out Together 6:30 Back in the day 7:00 First Talk 7:30 Native Report 8:00 Our Spirits Don't Speak 9:00 Wapos Bay 9:30 Fish out of Water 10:00 The Other Side 11:30 Hand Game	3 6:00 Indian Pride 6:30 Oskayak Down Under 7:00 First Talk 7:30 People of the Pines 8:00 Spirits for Sale 9:00 Wapos Bay 9:30 Fish out of Water 10:00 The other Side 10:30 Back in the Day 11:00 Every Emotion Costs	4 6:00 On Native Ground 6:30 Osiyo Voices of the Cherokees 7:00 First Talk 7:30 Making Regalia 8:30 After the Gold Rush 9:00 Wapos Bay 9:30 Fish Out of Water 10:00 Moose TV 10:30 Indigenous Focus 11:00 Colorado Experience	5 6:00 Indian Pride 6:30 Down the Mighty River 7:00 First Talk 7:30 People of the Pines 8:00 Don't Get Sick After 9:00 Wapos Bay 9:30 Fish out of Water 10:00 Native Shorts 10:30 Rez Rides 11:30 The Tundra Book	6 6:00 Storytellers in Motion 6:30 On Native Ground 7:00 First Talk 7:30 Make Prayers 8:00 American Outrage 9:00 Wapos Bay 9:30 Fish out of Water 10:00 The Aux 10:30 Champions of the North 11:30 Finding Refuge	7 6:00 The Other Side 6:30 Indians and Aliens 7:00 Indigenous Focus 7:30 Dabiyiyuu 8:00 Osiyo Voices of the Cherokees 8:30 Native Report 9:00 Wapos Bay 9:30 Fish out of Water 10:00 Mixed Blessings 10:30 Moose TV 11:00 The Refuge
8 6:00 Working it Out Together 6:30 Back in the Day 7:00 First Talk 7:30 Native Report 8:00 Native Planet 9:00 Wapos Bay 9:30 Fish out of Water 10:00 Cashing In 10:30 Oskayak Down Under 10:30 Amazonia Eterna	9 6:00 Working it out Together 6:30 Back in the Day 7:00 First Talk 7:30 Native Report 8:00 Horse Tribe 9:00 Wapos Bay 9:30 Fish out of Water 10:00 The Other Side 10:30 Indians and Aliens 11:30 Medicine Game	10 6:00 Indian Pride 6:30 Oskayak Down Under 7:00 First Talk 7:30 People of the Pines 8:00 Smoke Traders 9:00 Wapos Bay 9:30 Fish out of Water 10:00 The Other Side 10:30 Back in the Day 11:00 Medicine Game	11 6:00 On Native Ground 6:30 Osiyo Voices of the Cherokees 7:00 First Talk 7:30 Making Regalia 8:00 Apache 8 9:00 Wapos Bay 9:30 Fish Out of Water 10:00 Moose TV 10:30 Indigenous Focus 11:00 Yellow Fever	12 6:00 Indian Pride 6:30 Down the Mighty River 7:00 First Talk 7:30 People of the Pines 8:00 From the Badlands to Alcatra 9:00 Wapos Bay 9:30 Fish out of Water 10:00 Native Shorts 10:30 Rez Rides 11:30 Horse Tribe	13 6:00 Storytellers in Motion 6:30 On Native Ground 7:00 First Talk 7:30 Make Prayers 8:00 Across the Creek 8:30 Che AH Chi the History 9:00 Wapos Bay 9:30 Fish out of Water 10:00 The Aux 10:30 Champions of the North 11:30 Sacred Steps	14 6:00 The Other Side 6:30 Indians and Aliens 7:00 Indigenous Focus 7:30 Dabiyiyuu 8:00 Osiyo Voices of the Cherokees 8:30 Native Report 9:00 Wapos Bay 9:30 Fish out of Water 10:00 Mixed Blessings 10:30 Moose TV 11:00 Our Spirits
15 6:00 Indian Pride 6:30 Oskayak Down Under 7:00 First Talk 7:30 People of the Pines 8:00 The Young Ancestors 9:00 Wapos Bay 9:30 Fish out of Water 10:00 Mixed Blessings 10:30 Back in the Day 11:00 Every Emotion Costs	16 6:00 Working it out together 6:30 Back in the day 7:00 First Talk 7:30 Native Report 8:00 Why Treaties 9:00 Wapos Bay 9:30 Fish out of Water 10:00 The other Side 10:30 Indians and Aliens 11:00 Yellow Fever	17 6:00 Indian Pride 6:30 Oskayak Down Under 7:00 First Talk 7:30 People of the Pines 8:00 Meat 9:00 Wapos Bay 9:30 Fish out of Water 10:00 The other Side 10:30 Indians and Aliens 11:00 For the Generations	18 6:00 On Native Ground 6:30 Osiyo Voices of the Cherokees 7:00 First Talk 7:30 Making Regalia 8:00 Incas Remembered 9:00 Wapos Bay 9:30 Fish Out of Water 10:00 Moose TV 10:30 Indigenous Focus 11:00 Rising Voices	19 6:00 Indian Pride 6:30 Down the Mighty River 7:00 First Talk 7:30 People of the Pines 8:00 Buffy St. Marie 9:00 Wapos Bay 9:30 Fish out of Water 10:00 Native Shorts 10:30 Rez Rides 11:00 Trail of Tears	20 6:00 Storytellers in Motion 6:30 On Native Ground 7:00 First Talk 7:30 Make Prayers 8:00 People of the Beautiful 9:00 Wapos Bay 9:30 Fish out of Water 10:00 the Aux 10:30 Champions of the North 11:00 Racing the Rez	21 6:00 The Other Side 6:30 Indians and Aliens 7:00 Indigenous Focus 7:30 Dabiyiyuu 8:00 Osiyo Voices of the Cherokees 8:30 Native Report 9:00 Wapos Bay 9:30 Fish out of Water 10:00 Mixed Blessings 10:30 Moose TV 11:00 Spirit Tipis
22 6:00 The Tundra Book 8:00 Native Voices 8:30 On Native Ground 9:00 Wapos Bay 9:30 Fish out of Water 10:00 The Aux 10:30 Native Shorts 11:00 Good Meat	23 6:00 Working it out Together 6:30 Back in the day 7:00 First Talk 7:30 Native Report 8:00 Alaska Tribes 9:00 Wapos Bay 9:30 Fish out of Water 10:00 The Other Side 10:30 Indians and Aliens 11:00 Incus Remembered	24 6:00 Indian Pride 6:30 Oskayak Down Under 7:00 First Talk 7:30 People of the Pines 8:00 Colorado Experience 9:00 Wapos Bay 9:30 Fish out of Water 10:00 The Other Side 10:30 Indians and Aliens 11:00 Why Treaties	25 6:00 On Native Ground 6:30 Osiyo Voices of the Cherokees 7:00 First Talk 7:30 Making Regalia 8:00 Crying Earth Rise Up 9:00 Wapos Bay 9:30 Fish Out of Water 10:00 Moose TV 10:30 Indigenous Focus 11:00 Dances of Life	26 6:00 Indian Pride 6:30 Down the Mighty River 7:00 First Talk 7:30 People of the Pines 8:00 Apache 8 9:00 Wapos Bay 9:30 Fish out of Water 10:00 Native Shorts 10:30 Rez Rides 11:30 Why Treaties	27 6:00 Storytellers in Motion 6:30 On Native Ground 7:00 First Talk 7:30 Make Prayers 8:00 Wapos the Movie 9:30 Fish out of Water 10:00 The Aux 10:30 Champions of the North 11:30 Dakota 38	28 6:00 The Other Side 6:30 Indians and Aliens 7:00 Indigenous Focus 7:30 Dabiyiyuu 8:00 Osiyo Voices of the Cherokees 8:30 Native Report 9:00 Wapos Bay 9:30 Fish out of Water 10:00 Mixed Blessings 10:30 Moose TV 11:00 Incas Remembered
29 6:00 Choctaw Code Talkers 7:00 Johnny Be Good 7:30 Rez 8:00 Native Voice 8:30 On Native Ground 9:30 Fish out of Water 10:00 Native Shorts 10:30 The Aux 11:00 Native Shorts	30 6:00 Working it out Together 6:30 Back in the Day 7:00 First Talk 7:30 Native Report 8:00 Original Patriot 9:00 Wapos Bay 9:30 Fish out of Water 10:00 The Other Side 11:00 Spirit Tipis	31 6:00 Indian Pride 6:30 Oskayak Down Under 7:00 First Talk 7:30 People of the Pines 8:00 Animal Songs 8:30 Native Oklahoma 9:00 Wapos Bay 9:30 Fish out of Water 10:00 The Other Side 10:30 Indians and Aliens 11:00 Native American Healing				

Profile: 'Wyland's Art Studio'

Painting programs on public television are as synonymous as hot dogs and apple pie are to the American culture. Since the famous Bob Ross made it ok to teach painting on television, many others are doing the same. The latest to do this is Robert Wyland, or just known in the biz as Wyland. Known for painting marine life, Wyland has changed the way people think about our oceans when he started painting life-size whales on the sides of buildings in the 1980s. A Michigan native, Wyland moved to Laguna Beach, California in 1981. Since then, he earned the reputation of being one of America's most exceptional innovative artists and outspoken advocates for marine life and conservation.

His non-profit Wyland Foundation supports several conservation programs, including his monumental "100 Whaling Walls" mural project, an epic series of 100 life-sized marine life murals that span 12 countries on four continents. The murals are collectively viewed by an estimated 1 billion people every year.

Wyland's instructional series for national public television, "Wyland's Art Studio," now in its sixth season, encourages viewers across the United

States to follow along with him as he paints a diverse range of marine life while discovering the many ways the ocean enriches our lives. He is considered one of the most recognized and beloved artists in the nation through the enormous extent of Wyland public artworks, his award-winning art galleries, and community service projects.

Wyland's ceaseless efforts to promote engagement around the world about the need to protect our oceans have truly earned him a place among the world's most socially conscious artists.

"Wyland's Art Studio" focuses on techniques for painting nature and outdoor scenes. Building on his national reputation as an artist and conservationist, Wyland has broadened his range of subject matter for the show to attract and maintain the widest possible audience, from beginning painters to those who want to hone their craft under the tutelage of a proven master.

"Wyland's Art Studio" takes viewers step by step through each of his paintings. Viewers discover elements of perspective, color theory, color mixing, texture, scale, and form, even tips on selecting

paints, canvas, and subject matter. Additionally, the show features a complementary message about conservation that lovers of our ocean, lakes, rivers, streams and wetlands everywhere can relate to.

Wyland's Art Studio can be seen on RSU Public TV Thursdays at 2 p.m.



MidAmerica
INDUSTRIAL PARK

LIVING GRAND
ON **GRAND LAKE**

New Season Premieres
June 2nd at 7PM

B-Sew Inn

Sewing • Quilting • Embroidery

RSU TV welcomes B Sew Inn as a new underwriter for the Sewing with Nancy and Fons and Porter shows.

Fons & Porter's
Love of **Quilting**

Mondays at 3pm **Tuesdays at 3pm**

Sam's Perspective with Sam Jones



Sam Jones
Host

Here is today's question: Who do you trust? Better still, who can you trust? What about news and information? It would be foolish to get all your news from one source. So, hopefully your news comes from not just television, but newspapers and with a healthy sprinkling of news magazines.

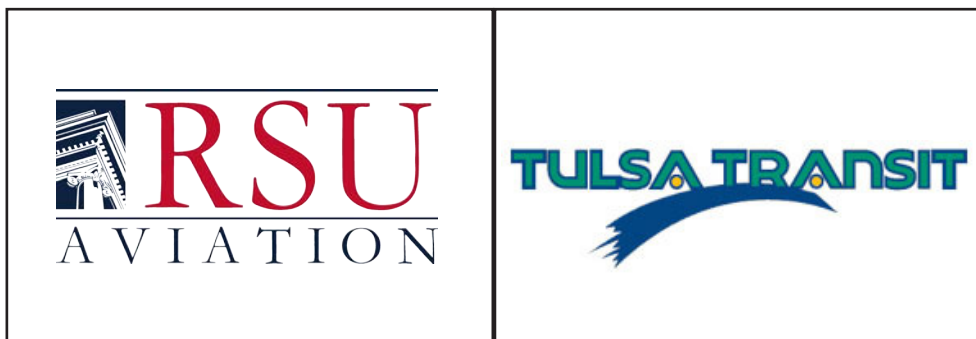
Now I know you are busy, but it is important to look for news and not opinion, especially if you want to be fully informed. My offering to you today is opinion.... mine. But it's based on information from newspapers, television, and respected magazines and journals. For entertainment, I might listen to Rush or watch Fox News from time to time but again, that's for entertainment not real news or information. If you look to CNN for news and information, be careful. This once proud network is now chasing the dollar. In other words, it's hard to know what's news and what's really just the slant of the day. The big three networks are pretty safe but you have to know that Fox swings one way and MSNBC swings the other.

And while I'm at it, where do you get your religious booster shot? Do you go to church or synagogue or

mosque, or do you stay home and pull your religion from folks that want to send you oil or a piece of cloth that you can expect to receive a windfall of money with if you use it correctly or use to cure just about anything? Not saying anything is wrong with that. What I am saying is you need to decide if 'you' are doing the praying or if you are caught up in some sort of religious co-dependency.

Right now, we are caught up in a state budget crisis and a national election cycle. No matter which way we turn we are being faced with a fork in the road, a choice we have to make. So, who do we trust to get through it and what's the best solution for the state and the nation? There are no easy answers even though it might appear so. The so-called debates are no help for me because they aren't really debates; they're nothing more than reality TV.

Advertising won't work on me either. I can tell you what I base my decisions on, but you are free to come up with your own methods. I read a great deal, newspapers and news magazines. I also look to the three major television networks for updates. Because of my age, I'm also able to rely on past experience as to which party, candidate, or budget decision stands a better chance of helping the people of the state or the nation as a whole. But more than anything else, I question the trust issue. Meaning, I also question my sources, which causes further investigation on my part. Keep in mind, you have only one vote, so spend it wisely. Henry Clay once said, "Government is a trust and the officers of the government are trustees; and both the trust and the trustees are created for the benefit of the people."



MEET STEVEN RAICHLEN 06.22.16

LUNCHTIME DEMO AND BOOK SIGNING

11:00 - 1:00 PM
HASTY-BAKE
1313 LEWIS AVE, TULSA
FREE ADMISSION

HASTY-BAKE

2 CHANGES

PRIVATE MEET AND GREET, BOOK SIGNING, AND BBQ DINNER

5:30 PM
BURN CO. BARBEQUE
1738 S. BOSTON AVE, TULSA
\$65, \$75 AFTER MAY 15TH
ONLY 70 TICKETS AVAILABLE





THEN WATCH STEVE'S NEW SHOW "PROJECT SMOKE" BEGINING 06.25. 16 AT 3:30PM

RSU Radio Report with Cathy Coomer



Cathy Coomer
General Manager,
RSU Radio

March 20th was the first official day of spring. We all look forward to spring...a new beginning with the sun's temperature beginning to rise as the daylight grows longer. Spring is an awakening and renewal of new events, new promotions, and new music at RSU Radio 91.3 FM!

Spring means an end of Rogers State University basketball coverage for the season and the beginning of our LIVE coverage of RSU baseball and softball. Being an outdoor sport, we hope to broadcast total 25 games this season.... weather permitting of course.

This spring also marks the 3rd year for RSU Radio to co-sponsor the Claremore "West Bend Block Party on the Green," which is held on the third Tuesday of every month beginning in April. The exact dates for this season are April 19, May 17, June 21, July 19, August 16, September 20 and October 18. It's a fun event, free to the public with activities and giveaways for the kids. And did I mention FOOD TRUCKS?

Music is provided each month by artists involved with "Musician's Haven", a non-profit organization located in Claremore that works with them, scheduling performances for area events while also providing the opportunity for us to be able to experience and appreciate their music. During each Block Party, two different artists or groups will perform from 6-7:15 p.m. and again from 7:30-9 p.m. The other primary co-sponsors of the West Bend Block Party are MoreClaremore.com and the Claremore Expo Center. We also want to give a shout out to the area Boy Scouts for always volunteering and to Destiny Life Church for always donating their inflatables for the kids!

Tulsa International Mayfest is four-day celebration of music and art held May 19-22 in downtown Tulsa featuring some of the best musicians and performers from the Tulsa area as well as showcases of creative and eclectic works of art in every format. Mayfest really does have something to offer everyone... it's a great place to take your kids, the food is always good, and IT'S FREE! For more information, check out their website at www.tulsamayfest.org.


Also that weekend is the 13th annual Blue Dome Art Festival on May 20-22 at Second and Elgin

"under the blue dome." This festival will also feature hundreds of art vendors, live music, and local artists and performers. The styles and textures you will see throughout the art booths include everything from paintings, pottery, photography, jewelry, woodcraft, glassware and much more.

And, I can't forget the incredible beautiful Guthrie Green park and entertainment area located in the Brady Arts District in downtown Tulsa. Music, festivals, and arts and crafts are part of the Guthrie Green throughout the year.

There is so much to do in the spring and northeast Oklahoma offers its residents and guests a huge selection to choose from ... garden shows, boat & travel, custom car shows.... and the list goes on.

Stay tuned to RSU Radio 91.3 FM throughout the spring and into the summer for not only great music but also for the hundreds of free tickets we will be giving away to indoor and outdoor concerts...music festivals, etc. We love the spring here at RSU Radio and we hope you will join listening to us!



GRDA
Grand River Dam Authority
A Proud Sponsor of RSU Public TV

Green Country Perspectives
with Sam Jones



Thursdays at 6pm



SPECIALTY EVENING PROGRAMS

Mon 7p-8p "Backroads" 8p-9p "HiFi Herasy"

Tue 6p-8p "Riot Radio"

Wed 5:30p-6p "Bacon, Beans & Limousines" (3rd Wed of each month) 6p-7p "OK Connection"

8p-9p "Sabor Latino" 9p-10p "The Spice of Life"

Thu 5p-6p "Best of British" 6p-8p "Rude Boy Radio"

Fri 5p-6p "Fresh Fridays" 7p-2a "Friday Night Rap Up"

Sat 5p-6p "HiFi Herasy" 6p-7p "The Rock Doctor" 7p-2a "Saturday Night Trip"

Sun 5p-7p "Gender Journey" 7p-8p "The Don White Show" 8p-9p "Bluegrass on the Hill"

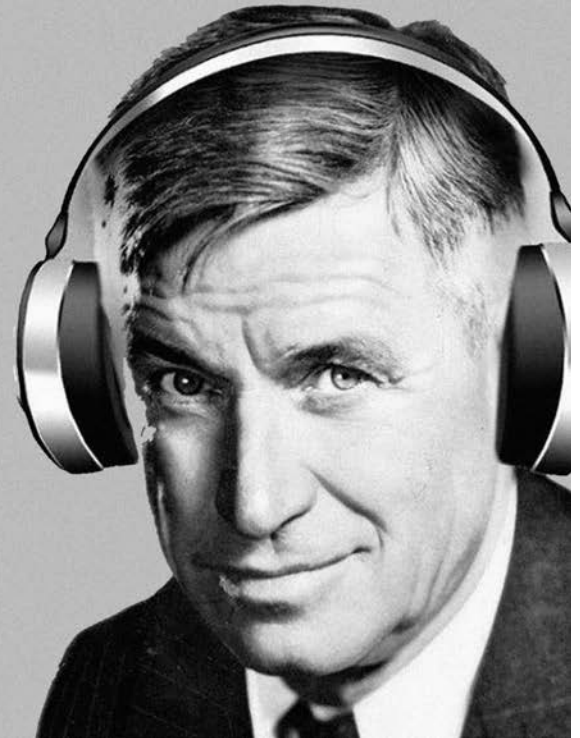
9p-10p "Int'l Americana" 10p-12a "Rude Boy Radio" 12a-1a "E-Town" 1a-2a "Beale Street Caravan"

Listen to 91.3's True Alternative Music throughout the day!

BACON BEANS & LIMOUSINES PODCAST



Every 3rd Wednesday 5pm





RSU Communication Students, Faculty Win State Awards



Students from Rogers State University's Department of Communications and the RSU Student Broadcasting Association earned five awards during the annual Oklahoma Association of Broadcasters convention in March. Winning awards were: Adrienne Munoz of Waxahachie, Texas; Kessiah Neff of Claremore; Mike Brower, a senior from Pryor; Matt Jordan, a sport management senior from Pryor; and Geoff Parachin, a junior from Tulsa, who also earned a \$2,000 scholarship. A record 241 entries were judged during this year's competition in 12 radio and 18 television categories, as well as scriptwriting. Students from 14 Oklahoma universities, colleges and community colleges were represented in the competition. Cathy Coomer, RSU SBA Advisor and Assistant Professor in the Department of Communications, earned the 2016 Lisa John Fellowship, which includes a \$3,000 award and places an Oklahoma faculty member in a four-week work program at an Oklahoma radio or television station.

Seniors Earn Prestigious Law School Scholarships



Seth Blanton



Colton Scott

Two honors seniors at Rogers State University have been named recipients of substantial scholarships to attend law school. Seth Blanton, a military history senior from Midwest City, and Colton Scott, a business administration – accounting senior from Claremore, have been accepted into law programs at Oklahoma City University and the University of Tulsa, respectively. Blanton received the OCU School of Law Dean's Scholarship, which provides full tuition and fees and is renewable for up to two years. Scott received a TU College of Law Scholarship for approximately 90 percent of his tuition with an option to use the funds to study abroad in Ireland. Both Blanton and Scott credit the RSU Honors Program with preparing them to attend law school.

Freshman Student-Athlete Earns Civic Fellowship



Katelyn Gamble

A Rogers State University freshman was among 218 college students nationwide to be named a 2016 Newman Civic Fellow in recognition for her service to the local community. Katelyn Gamble, a business administration-accounting major from Edmond, is a member of the RSU Hillcats softball team and the President's Leadership Class at RSU. Students selected as a Newman Civic Fellow have demonstrated they are making the most of their college experiences to better understand themselves, the root causes of social issues and effective mechanisms for creating lasting change. Newman Civic Fellows are recommended by college and university presidents to acknowledge motivation and ability in public leadership.

RSU Unveils New University Logo



Rogers State University introduced a new university logo that focused on its historical legacy while also representing a new era for the 116-year-old institution. The new logo's visual centerpiece is a shield crest featuring Preparatory Hall, the university's first building constructed when the school was Eastern University Preparatory School. Listed on the National Register of Historic Places, Prep Hall has served as an iconic symbol for the university, thanks in large measure to its stately architecture, distinctive gold dome and prominent location atop College Hill overlooking Claremore.

"As RSU graduates its first master's degree students this year and completes the final year of transitioning to NCAA Division II, we are passing significant milestones in the continued development of this great institution," said RSU President Dr. Larry Rice. "Through every era of this school's history, Prep Hall has been a constant beacon atop College Hill and it's fitting that our new logo so prominently features this iconic building."

The logo was created by university graphic designer Randy Riggs, a 2004 RSU graduate who has earned more than 50 state and national awards during his decade with the university's public relations office. "The new logo honors the tradition of RSU by focusing on Preparatory Hall, the first and most recognizable building on campus," Riggs said. "The clean and simplified lines create a modern take on the Neoclassical architecture, and the building is presented in a shield to hearken back RSU's legacy as the Oklahoma Military Academy."

Thank You Proud Sponsors of RSU Public TV

Kevin Abbey
 Sandra Abramowicz
 Phillip & Ursula Adams
 Sandra Adams
 Teresa & Alex Adwan
 Akuna Ajakanu
 Carolyn Allen
 Joe & Dotty Allen
 John Allen
 Martie Allen
 Barbara Allinder
 Charlotte Chambers
 Phyllis Chambers
 D.P. Allison
 Joan Almeida
 Gary & Micki Alred
 Paul Alridge
 Susan Anders
 Cyndee Anderson
 Gary Anderson
 Velma Andreg
 Wanda Andrews
 Guillermo Arnaud
 Dan & Roberta Arnold
 Betty Aronhalt
 Patricia Ashe
 Dennis Asher
 Marilyn Asher
 Dolores Atkinson
 Leonard Att
 Robert Austin
 Bill & Barbara Autry
 Judy Baggett
 Carole Baker
 Joe & Charlotte Baker
 Karen Baker
 Sherry Baker
 Warren Baker
 Bridget Ball
 John Bankel
 Janet Barto
 J.D. Basler
 Sharon Bastel
 Lorraine Bates
 Milton Bates
 Gerald Battson
 Jean Bauer
 Rod Bauer
 Sydney Beasley
 Kay Beauchamp
 Robert Beck
 Rita Bedford
 Bill & Vicki Beierschmitt
 Deedee Bejcek
 Diana Bell
 Rita Bell
 Susan Bell
 Erlene Benigar
 Douglass Bennett
 Ivan & Marjorie Benson
 Stu Bernard
 Jimmy Berry
 Sandra Bertelle
 Bhadrash Bhakta
 Claire Biehl
 Sherri Bileyev
 Bill Hodge Excavation
 Larry Billue
 Shirley Bird
 Mary Black
 Martha Blackburn
 William & Barbara Blake
 Janis Blanton
 Don Bolt
 Victor & Donna Bond
 Tommy Bonds
 Mona Boness
 Bill & Barbara Boone
 James Bost
 Violet Bowers
 Marion Bowman
 Kay Devin
 Loretta Kay Bradley
 Shelly Bradley
 William & Janice Bradley
 Mary Brett
 Thomas R. Brett
 John Brewer
 Jim Bridenstine
 Leota Briggs
 Glenda Brogna
 Cheryl Brown
 Jean Brown
 Jerry & Mary Lee Brown
 Kelly Brown
 Nancy Brown
 Patty Brown
 Carla Bryant
 Patricia Buckner
 Mark Bull
 Michael Bumpas
 Barbara Burke
 Scott Burkhardt
 Mary Burkhead
 Ethel Burliegh
 Bill Burnett
 Frances Burns
 Francis Burns
 Freddie Burson
 Wayne Burton
 Natasha Burts
 Jan Busey
 Alta Bush-Selvey
 Danan Butler
 Mary Butler
 Beverly Buzzard
 Jane Bylander
 Doris Cameron
 Bruce Campbell
 Kenneth Campbell
 Thomas M. Campbell
 Joanne Caporaso
 Karen Carey

Robert & Carol Carnagey
 Leona Carr
 Joella Carson
 Daniela Carter
 John & Roberta Cary
 Yvonne Case
 Mike Cashen
 Joyce Casto
 Jeff Castor
 Sandra Caughman
 Timothy Chamberlin
 Charlotte Chambers
 Phyllis Chambers
 Iris Chandler
 Sheila Chapman
 Cathy Cheney
 Cherokee Nation Business
 Cherokee Nation Entertainment
 Elizabeth Childers
 Kimberly Cisternino
 Claremore Convention & Visitors Bureau
 Evelyn Clark
 Margie Clark
 Peggy Clark
 Wanda Clark
 Ted Claussen
 Amanda Clinton
 Dolores Atkinson
 John Cloud
 Mary Clumm
 Donna Cobb
 Marie Coingrich
 Vicki Coltrin
 Phyllis Cole
 Helen Collier
 Sarah Conduff
 Delesie Conner
 Clarence Cook
 Lee Cooper
 Charlotte Cope
 Virginia Copeland
 David Corbett
 Rena Corbett
 Mary Corley
 Fred & Lee Cornish
 Howard Cotner
 Jean Bauer
 Valera Cottle
 Brent Cottrell
 Country Fare Quilters Guild
 Melba Cousins
 Irene Cowell
 Ann Cowles
 Diana Cox
 Glenna Craig
 Denise Crakaal
 Stephen Cranford
 Claudia Cravens
 Randall Crawford
 Henry Crowe
 Robin Crowell
 Anthony Crowsan
 Solomon Cruz
 Michelle Curtis
 Linda Cutchall
 William and Melba Dazy
 Betty Dalrymple
 Sharon Dalrymple
 David Palfreyman
 Douglas Davies
 Catherine Davis
 James Davis
 Jannam Davis
 Marilyn Day
 Pauline Hale
 Deborah Hall
 Mamie Hall
 Eidon & Jeanette Hallum
 Brandon Halter
 Charles & Janet Hampton
 Tommy Hampton
 Dorris Hancock
 Kay Devin
 Mary Harbour
 Rhonda Hareu
 Lannie Harjo
 Alison Harris
 Carolyn Harris
 Gerald Harris
 John Harris
 Tim Harris
 Tom Harris
 Weldon Hart
 Renee Hartley
 William & Carol Hayes
 Robert Haymaker
 Barbara Hellem
 Betty Hendrix
 Virginia Henry
 Joyce Hensley
 Kay Herring
 Loren Hickman
 Nancy Hicks
 Carolyn Hicks
 Elizabeth Higgins
 Howard Hill
 Terry Hill
 David Hitchens
 Freida Hoffman
 Patsy Holden
 Victor Holleymann
 Sally Holliday
 Carlyne Holmes
 Sylvia Hooks
 Darlene Hont
 Merlin & Constance Hopper
 Stan Hopper
 Linda Horn
 Geneva Howard
 Joseph & Patricia Howard
 Ellen Howarth
 Clifford Hubbard
 John Huckaby
 Dana Hudgins

Carole Eytcheson
 Mildred Fain
 Vicki Farmer
 Mary Farr
 Robert & Pamela Farris
 Deborah Ferguson
 Tom & Marty Fernald
 Stasia Fielding
 Maggie Fields
 Deanna Fink
 Alana Fischer
 Mary Fisher
 Terry Fisher
 Grace Fites
 Fitzgerald Funeral Home
 William Flanagan
 Larry Floyd
 Diana Folsom
 Richard Ford
 D Sentell Fox
 Viva Foy
 Patrick & Estella Franken
 John & Helen Franklin
 Ferne E. Frazier
 Nola Freeman
 Teresa Freeman
 Jeanette Friedl
 Grady Fritz
 Robert Fugate
 Fred Fullerson
 Raye Fullbright
 Cheryl Fuller
 Maebeth Furrow
 Mary Gaberino
 Jeff Gaffen
 Carolyn Gardner
 Joann Gardner
 Jo & Tracey Garrison
 Carol Garvin
 Jim & Ronda Gaskill
 Serena Geary
 Diane Gelboskie
 Wayne & Alice Geist
 Loretta Genn
 Patricia Gerew
 Matthew Gerlach
 Roy Gills
 Marilyn Gilmer
 Barbara Glaze
 Jessica Gledhill
 Larry & Nancy Goad
 Dennis & Brenda Goins
 Cecil Gomez
 Judith Goodale
 Jane Goodwin
 Carolyn Graham
 Phil Graham
 Grand River Dam Authority
 Bernadette Gray
 Green Country Marketing Association
 Carolyn Greene
 Carolyn Greene
 Micheal Grisham
 Worth Gross
 Nicholas & Georgia Gualgiardo
 Debbi Guilfoyle
 Paul Gunderson
 Paula Guyton
 Sharon Hackl
 Sherry Haile
 Carol Hale
 John & Betty Hale
 Patricia Laub
 Laura Law
 Kathy Lay
 Susan Layman
 Floretta Leatherman
 Donald Lee
 Judy Lee
 Mary Lee
 Max Lee
 Sandra Lee
 Susan Lee
 Leta LeMasters
 Dave & Patricia Lowenz
 Patricia Lewis-McLane
 Tannis & Carole Lickliter
 LaRonda Limon
 William Lippertz
 Jan Littlefield
 Sherri Lloyd
 James Lott
 Leo Lotter
 Scott & Karen Love
 Ed Lowery
 Joseph Lowery
 Shirley Lowry
 Frank Lucas
 Patricia Lucas
 Laudine Luhn
 Donna Lundy
 Chris & Andrea Lyons
 Marsha Mabry
 Donna Macdonald
 Anna Mackey
 Jackie Maddux
 Manuella Malan
 Terry Manning
 James Mansolo
 Patricia Marlar
 Betsy Marquez
 Eileen Marshall
 Gordon Marshall
 Charollette Martin
 Julie Martin
 Thomas & Patricia Martin
 Zelma Martin
 Judi Maser
 Richard Mason
 Earl Massoth
 Ellen Mathews
 John F. Matthews
 Terri McClory
 Mark McCown
 Grace McCoy

Betty McCraw
 Donna McCulloch
 Mary Johnese McDonald
 Patrick McGinley
 Shelley McGuffin
 Anne McGuire
 Ann McKellar
 Sharon McKisick
 Marylin McLaughlin
 Rob McLerran
 Connie McMillan
 Ike McNutt
 Mary Mead
 David & Renee Meade
 Greg Meier
 Jim & Sharon Melton
 Patsy Melton
 Willie Melton
 Raymond & Dorothy Merrick
 L.F. Messall
 David Meuser
 Lee Meyer
 Terri Meyer
 Karen Meyers
 Judith Michaels
 Lynda Miller
 Patricia Miller
 Trudy Miller
 Don Mills
 David Mitchell
 Eugene Mofitt
 Philip & Susan Moldenhauer
 John Montgomery
 Moore Funeral Home
 Emma Rose Moore
 Mary Moore
 Mary Moore
 Sharon Moore
 Donna Moose
 Lyon & Ginny Morehead
 Charles & Cynthia Morgan
 Helen H. Morgan
 Grover Morris
 John & Denise Morris
 Bill Morrison
 Sandra Morrison
 Richard & Mary Mosier
 Vonne Moss
 Robert Moulis
 Markwayne Mullins
 Bradley Munro
 Carol Murphy
 Julia Murphy
 Donald Myrick
 Charles Nelson
 Katherine Neuman
 Velva Newton
 James Nofsinger
 Dennis & Lynn Noms
 Edward & Barbara Nonweiler
 Barbara Norman
 Douglas Norris
 Paul & Dorothy Norris
 Allen Nottingham
 Roberta Nozer
 Paul Nuckolls
 Nita Nuss
 Bill Obermark
 Mary Ann O'Brien
 James & Dorothy Ogden
 OK Mozart
 Oklahoma Ordnance Works Authority
 Oklahoma Pork Council
 R. E. Oldfest
 Bill Olson
 James Osborne
 Susan Osbourne
 Debra Overby
 Rose Owellen
 Mark Owen
 Kathy Palmer
 Liz Pantilegianis
 Ramona Parker
 Deanna Parker-Smith
 Mervin Parkhurst
 Betty Parrett
 Richard & Kathleen Patrick
 Katherine Patterson
 Lynda Patton
 Susan Paulson
 Brad Payas
 JoAnn Payne
 Adell Peak
 Janice Pearson
 Christine Peck
 Pelco Structural
 Robert Pelfry
 Rose Penton
 Carol Perez
 J.D. Perry
 Frances Petrilla
 Phillips 66 Company
 Mark & Gail Phillips
 Kathleen Phoenix
 Penelope Pierce
 Karen Piland
 Patricia Pixley
 Phil Pletcher
 Buddy & Linda Plummer
 Jan & Sharon Pollard
 Patricia Ponder
 Leon Polteer
 Vicki Potts
 Kay Pouncil
 Jennifer Powell
 Sandra Powers
 Sylvanna Precht
 Dr. Larry Prince
 Leticia Principe
 Kay Pritchett
 Jerry Prock

James Prothro
 Darell Pruitt
 Diane Pruitt
 Ken & Mary Purdy
 Madelyn Raska
 Leon Rau
 Debbie Ray
 Rose ReCasoner
 Margaret Redwine
 Glenn Reed
 Jeannette Reed
 Carol Reeder
 Jean Reehling
 Delpha Reeves
 Thomas Reeves
 R. Nancalene Reich
 Barbara Reneau
 Debbi Renfro
 Geneva Revas
 Wanda Reynolds
 Janet Rice
 Virginia Richard
 Sharon Richards
 Penny Richardson
 Terry Richardson
 Anna Riha
 Read Rinehart
 Carroll & Joyce Ritchie
 Loyce Robbins
 Deborah Roberts
 Jimmy Roberts
 Katherine Roberts
 Waymon Roberts
 Chris Robinson
 Milton & Margaretta Robinson
 William Rockefeller
 Helen Rodriguez
 Charles Rogers
 Katherine Rogers
 Theresa Roman
 Rebecca Roof
 Cora Lee Ross
 Rod Ross
 Wayne Roth
 Darlene Rough
 Doris Rowland
 Darrell Rubert
 Wanda Rumsey
 Rose Rusnam
 Robert Saladin
 Maureen Sams
 Wanda Sanders
 Patricia Sandman
 Lois Sanford
 Patty Saul
 Emma Saunders
 Deborah Sawney
 Cheryl Schaefer
 Jerry Scherer
 John Scott
 Tom Seely
 Sarah & Jack Seidle
 Sherrie Selvidge
 Janice Sharifi
 Donald Sharp
 Carol Shaw
 Patricia Shaw
 Jenneth Sheeler
 Steven Sheffner
 Carolyn Shell
 William & Carolyn Shell
 Kendra Shinn
 Everett Shissler
 Jack Shook
 Martho Shore
 Laverne Short
 Thomas Shupe
 Larry & Rita Signin
 Carolyn Simmons
 Judy Simmons
 Valentine Simmons
 Norman Simon
 Rosie Simpson
 Clara Sims
 Mark Skaggs
 Barbara Slagle
 Linda Slagle
 Shawne Slaton
 Carol Smith
 Sheila Smith
 Shirley Smith
 Sol Smith
 Teresa Smith
 Theo Smith
 Donna Southern
 Barbra Sparks
 Marie Sparks
 Streeter Speakman III
 Roger Spinks
 Michael & Anne Spitzmiller
 Frances Spurgin
 Gary Stanislawski
 Coy & Dorothy Stanley
 Mary Stauffer
 Dennis Steger
 Robert Stephens
 Mary Stevens
 Patricia Stevenson
 David Stewart
 Margaret Stoddard
 Leona Stoiber
 Lee & Sonya Stone
 Ralph Stone
 Barbara Stoner
 Claudia Story
 Jane Stottlemire
 Carol Strout
 Patty Stuck
 Bill Studebaker
 Memory Stuntz
 Memory Stunz
 Jenny Subana
 Kathlene Sullivan

L. F. Sumpter
 Revona Surber
 Teresa Sutton
 Patricia Swant
 Ann Szulski
 Neal Talley
 Catherine Tatum
 Dolores Tatum
 Hugh Taylor
 Jeff Taylor
 Maria Taylor
 Sandra Taylor
 Linda Teague
 Alberta Tedrick
 Linda Teel
 Grace Thomas
 Janet Thomas
 John & Pam Thomas
 Michael Thomas
 Eva Thompson
 Luella Thompson
 Randy Thompson
 Patrick & Joy Thornbrugh
 Laura Thornton
 Samuel & Christine Thorpe
 Sandra Thruston
 Joan Thurman
 Michelle Tidwell
 Julie Tierney
 Curtis Tillman
 Gaylon Tiry
 Tobie & L. Jeanne Titsworth
 Harry & Aileen Todd
 Charlotte Tolberg
 Dorothy Towler
 Joyce Towler
 Stacey Tracy
 Kathryn Trebelhorn
 Dale Trumble
 Bill & Jan Tucker
 Judy Tucker
 Robert Tucker
 Tulsa Historical Society
 Tulsa Transit
 Darlene & Dorothy Turnaukas
 Ann Turpen
 Mary Turpen
 Jack Tyree
 Jay Updike
 Roger Vallejo
 Frances Vanzet
 Donald & Joyce Varner
 Quendrid & Ralph Veatch
 Dan Vernon
 Deanna Vesper
 Carl Vickburg
 Charles & Carolyn Volturo
 Tom & Andrea Volturo
 Sheila Wagner
 John Wakulich
 Michaelyn Walker
 Virgil & Virginia Ann Walker
 Jack & Glenda Wallace
 Jean & Jack Watkins
 Katherine Watson
 Gary & Linda Watts
 Nancy Weeden
 Barry West
 Danny West
 L.J. & M.R. Wharton
 Ed & Sherry Whisler
 Gene Whisman
 Charles White
 Christopher White
 Rita White
 Thomas & Robin White
 Victor & Norma Whiteside
 Marilyn Wickman
 Gary & Elaine Wienhold
 Kerry Wiens
 Larry Wilcox
 Glenda Wilkins
 Mary Wilkinson
 Anis Williams
 Charles Williams
 James Williams
 Marlene Williams
 Charlotte Willis
 Joan Willis
 Myra Willis
 Carolyn Wilson
 Herminia Wilson
 Lawrence Wilson
 T.J. Wilson
 Sandra Wolf
 Juanita E. Wolfley
 Connie Wood
 Stephanie Wood
 Lance & Jane Woodliff
 Maxine Woods
 Diane Woodward-Frost
 Wayne Woodyard
 Vicki Wuerf
 John Wright
 Linda & Olin Wright
 Mark & Mary Wright
 Michael Wright
 Mary Wunsch
 Donald Wyatt
 Deyna Wynters
 Mary Ziegler
 David Zoller

The Signal

RSUTV
PUBLIC TELEVISION

ROGERS STATE UNIVERSITY
1701 W. Will Rogers Blvd.
Claremore, OK 74017



Thank You Proud Sponsors of RSU Public TV

<p>THE GERALD H. WESTBY JR. FOUNDATION</p>	<p>Green Country Marketing Association</p> 	<p><i>Broken Radio</i> KWON NEWS TALK 1400 AM</p> <p>KYFM 100.1 FM  Bright Star 100.1</p> <p>KPGM 1500 PUNJABIA</p> <p>KRIG REAL COUNTRY 104.9</p>	 CHEROKEE PHOENIX	<p>VISIT  CLAREMORE <small>... An Oklahoma Tradition</small></p>	<p>GRDA Grand River Dam Authority</p>
--	---	---	--	---	--